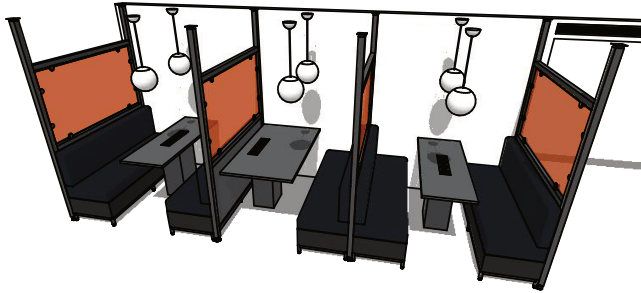


Tier - Workplace Projects: Tier auditorium seating collection for Connection Seating. The Tier range is a collection of auditorium seating modules, which can be configured to seat multiple groups for focused meetings and presentations. The modules can be combined to create small personal groups or large-scale conference environments. The range has recently expanded to include a two tier option, storage and corner units. I was given the concept and had to design how the system would fit together and produce the manufacturing and assembly drawings.

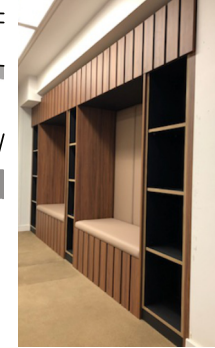
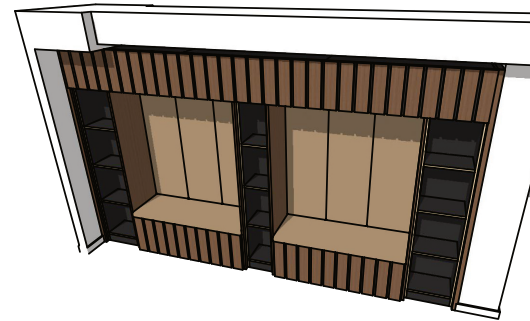
sample work

nottoffice

755
DESIGN



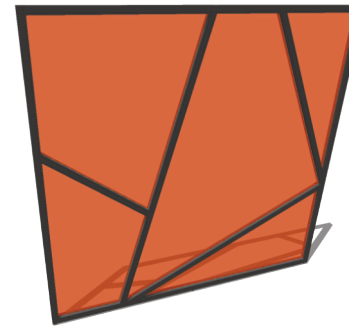
National Audit Office: Booth Seating



National Audit Office: Seating Storage Unit



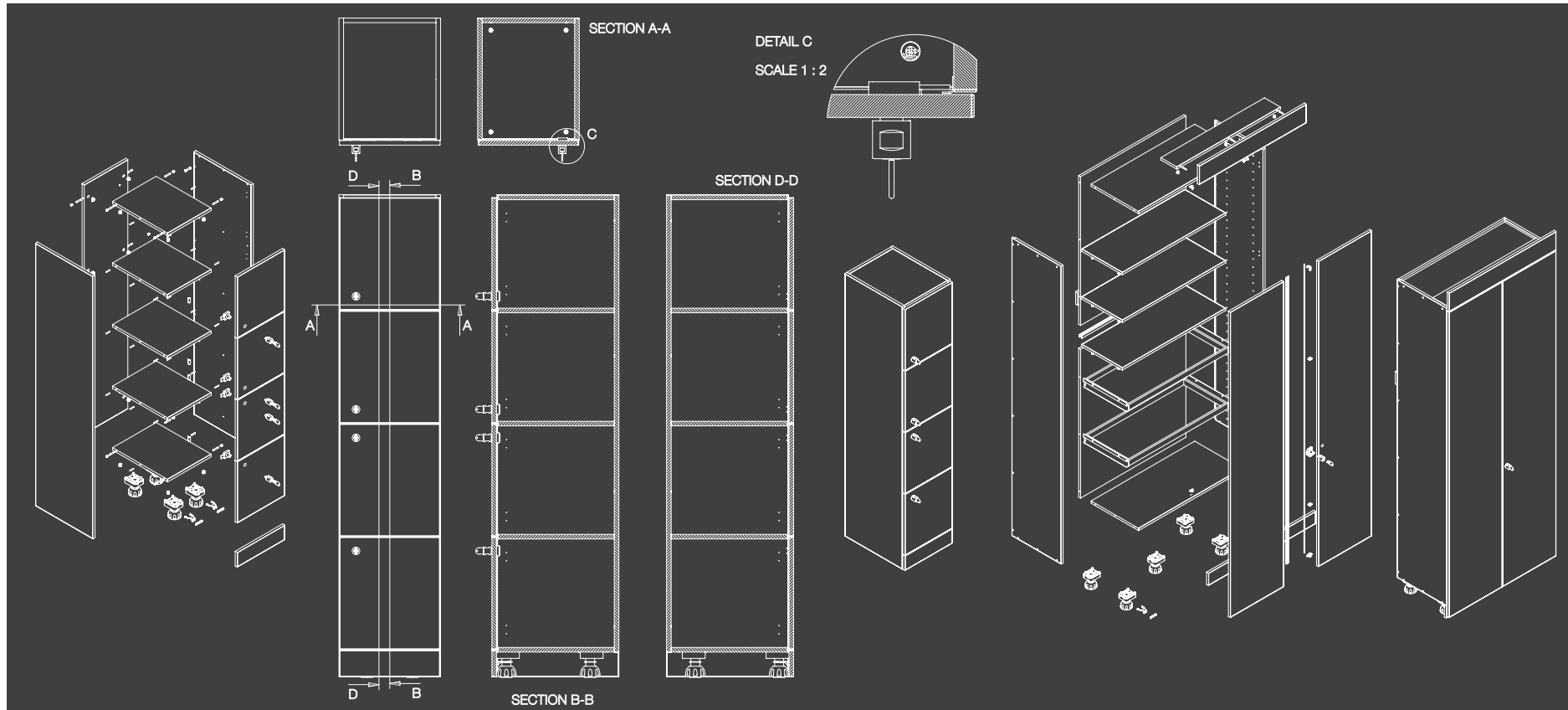
National Audit Office: TV Storage Unit



National Audit Office: Feature Wall

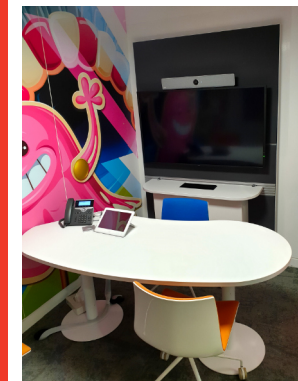
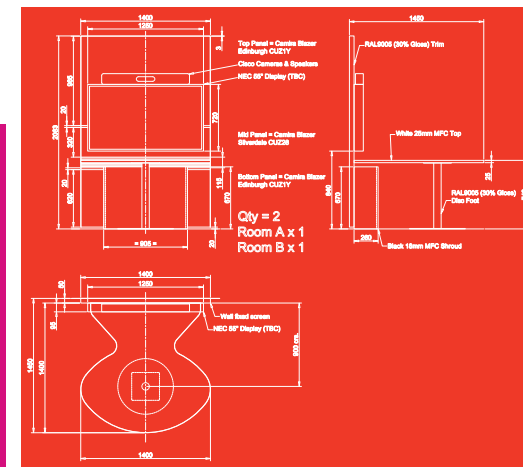
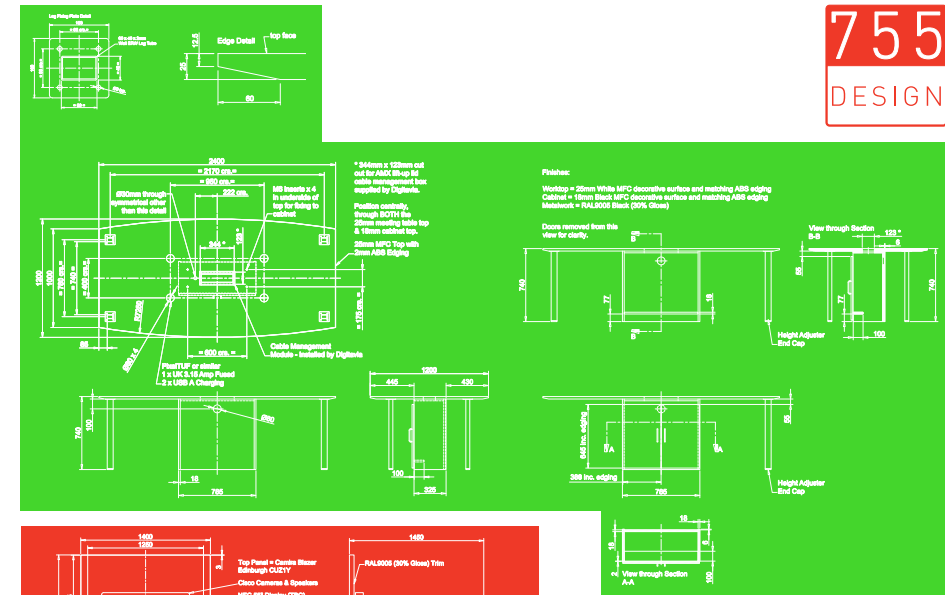
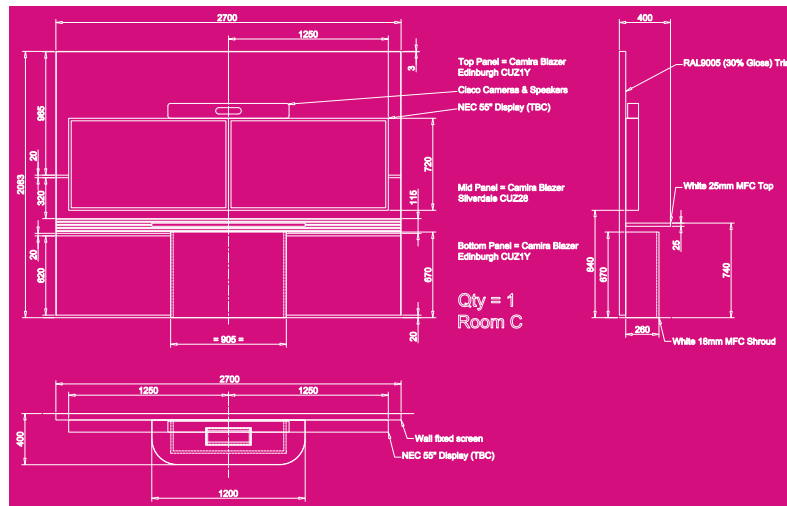
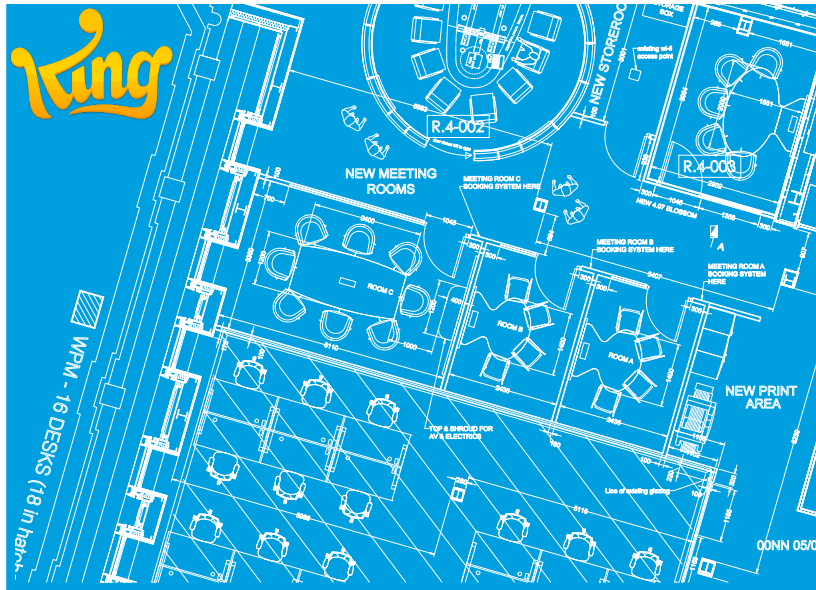
National Audit Office - Nott Office: Bespoke furniture designs for Nott Office for the National Audit Office. I was asked by Nott Office to attend site, take measurements and discuss the install. 3D visuals and simple design drawings produced in SketchUp and LayOut for signing off by the customer.

sample work



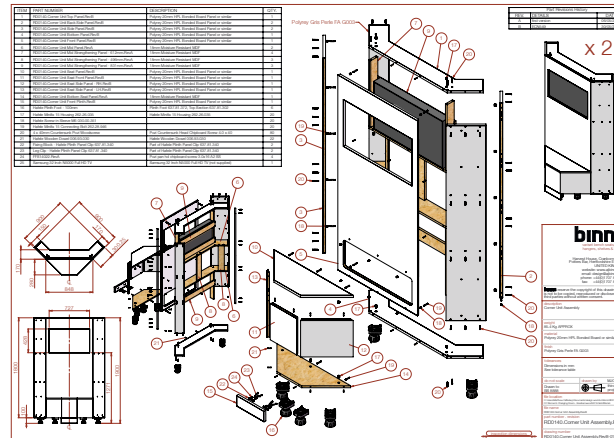
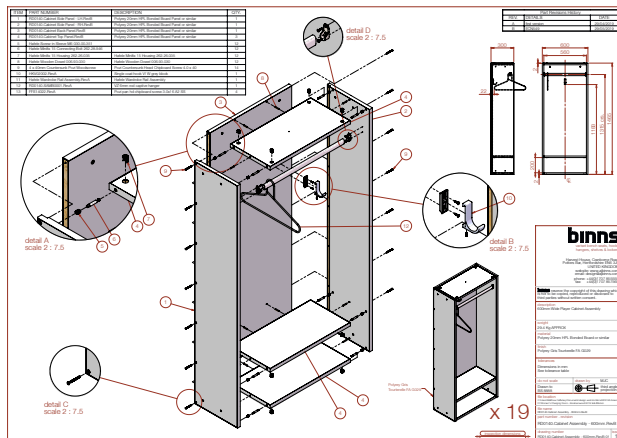
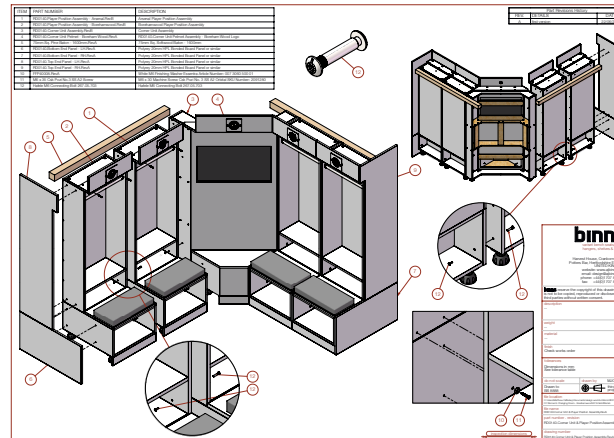
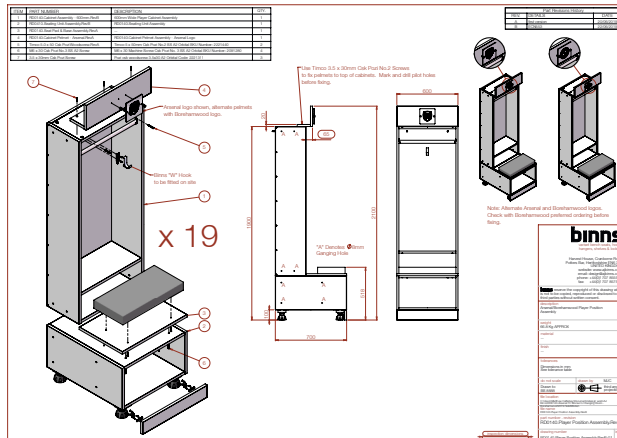
Storage Wall & Lockers - Nott Office: Design and produce manufacturing and assembly drawings for Nott Office's new ranges of lockers and storage wall. All drawings were produced in SolidWorks and care was taken to use common components across the two ranges wherever possible.

sample work



Space Planning & Bespoke Furniture - King: Initially working in King's London global HQ on the space planning for a personnel restack, I went on to help design new meeting rooms and bespoke wall fixed screens and furniture.

sample work



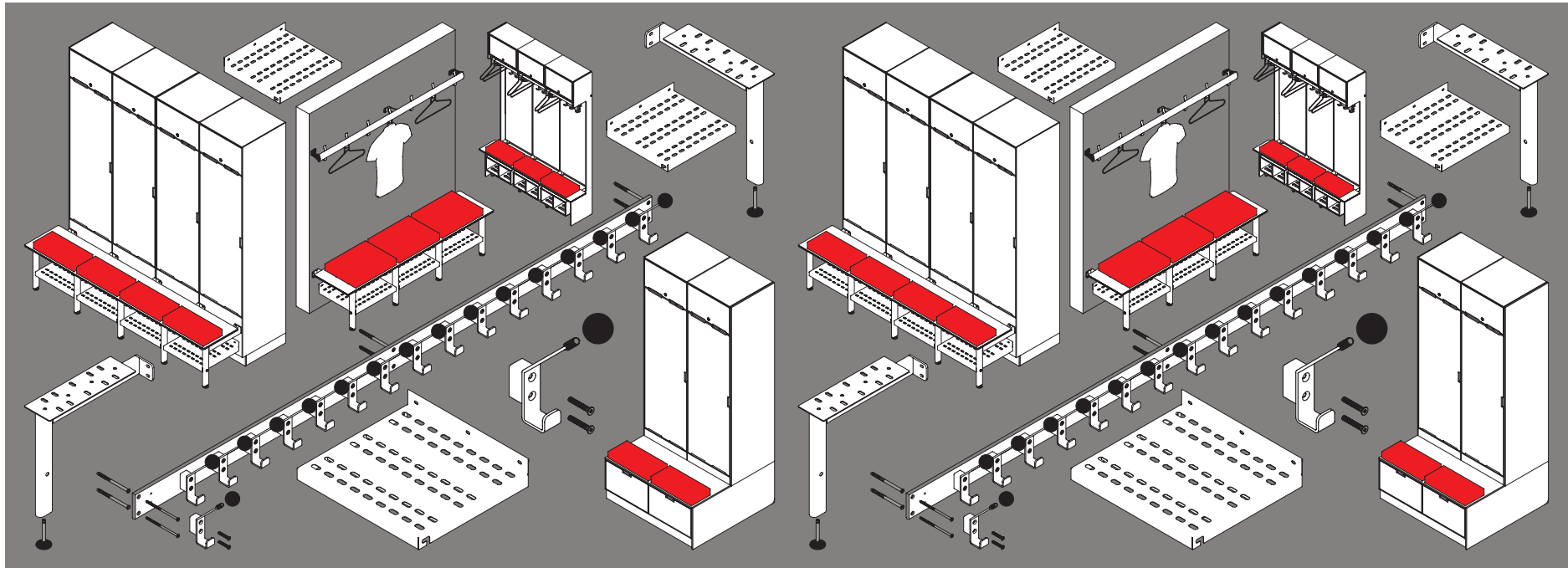
Changing Room Furniture - Borehamwood FC: Designed from concept to production new Borehamwood FC changing room at Meadow Park. Units are constructed from 20mm PolyPrey HPL Bonded Board Panel.

sample work



binns
DESIGN

755
DESIGN



Arsenal Training Ground: Player Performance Centre

90 Squad Team Places 46 Home Team Places 25 Women's First Team Places 52 Staff 8
Officials 6 Female Staff 2 Hydrotherapy Benches 16 Reverse Hook Rails 158 VZ8 Supports
9 VZ9 Supports 144 Shoe Trays 202 Seat Pads 1072 M6 x 40 SS Csk Head Socket Screw
578 Rawlplug Frame Fixing R-KKS-08120-R 158 M10 SS Nuts 42 12mm CGL Seating
Slats 9 AW Oak Seating Slats

sample work



Arsenal Training Ground: Player Performance Centre

sample work



Arsenal Training Ground: First Team Changing Room

27 Locker Benches for the Arsenal First Team Changing Room with 4 Corner Units. Concept, site survey, costings, quote, detail design, manufactured and installed between February and July 2017.

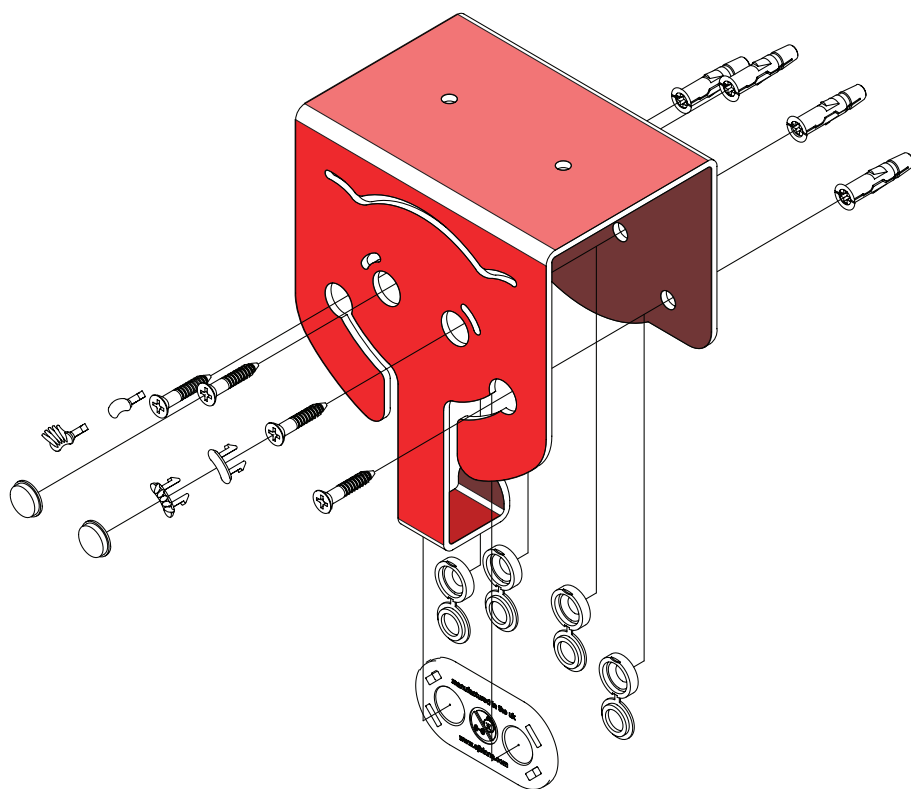
sample work

hookamals



sample work

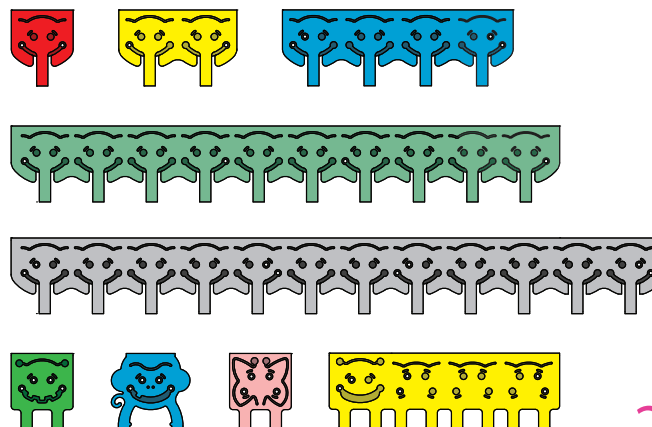




hookamals

Hookamals Safety Wall Fixed Hook - AJ Binns Ltd: Designed to conform to European Standard DIN7917. The hanging hook faces backwards so it is less of a hazard if a child falls against it. Manufactured from 2.5mm laser cut steel. Single hooks have been tested to hold 50kg.

I designed the two types of eyelash clip and the back plate they clip into. The back-plate has recessed areas on both sides which take self adhesive googly eyes.



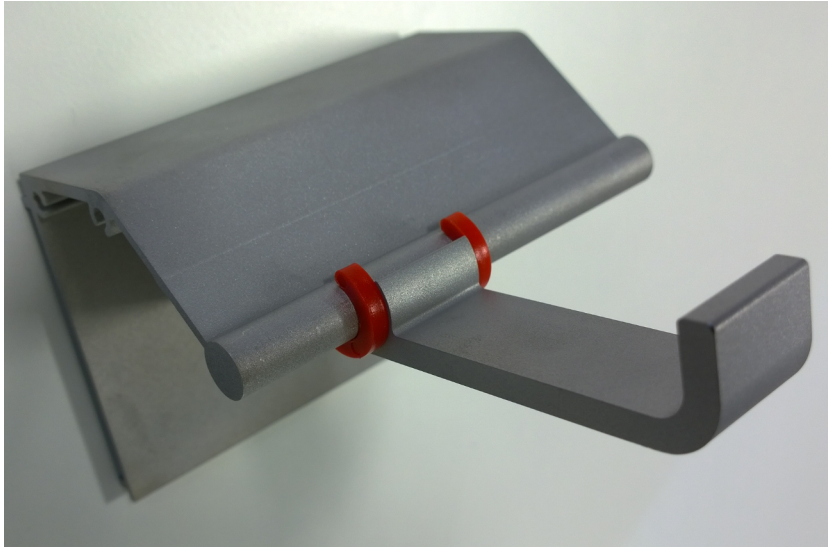
sample work



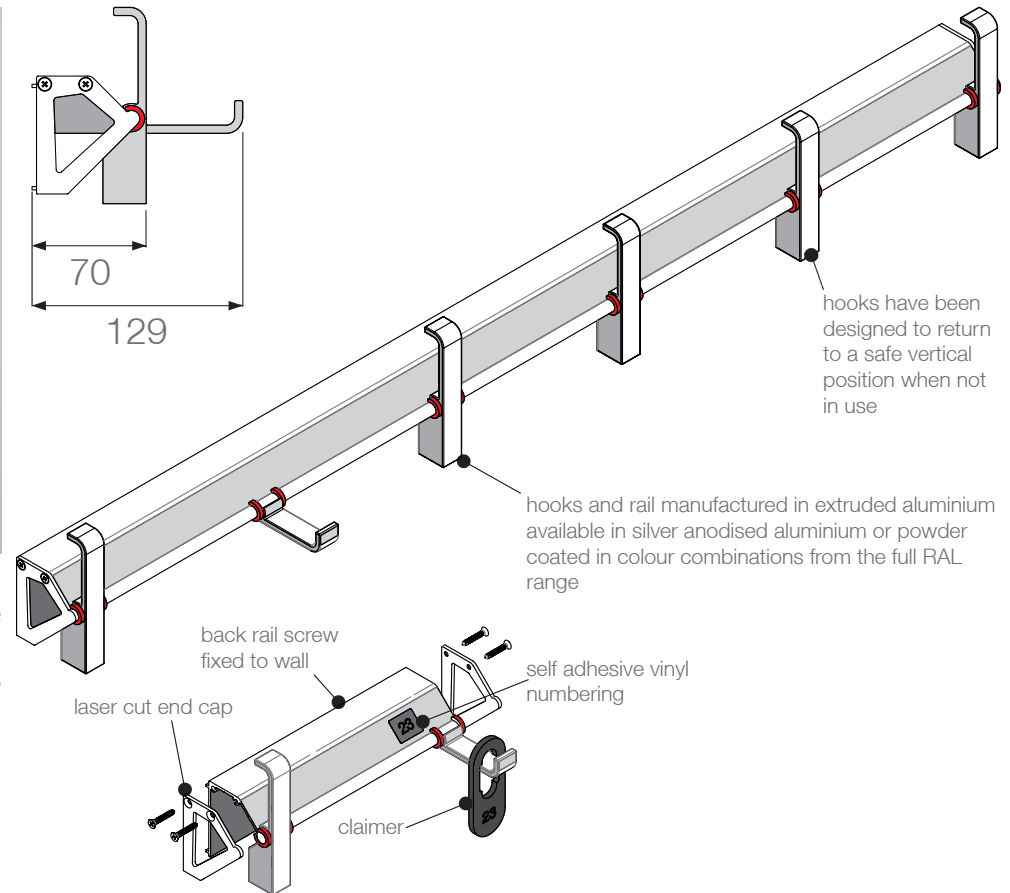


binns
DESIGN

755
DESIGN



Gravity Safety Hooks - AJ Binns Ltd: Extruded aluminium hook rail system. The hook has been designed to rotate upwards when not in use, so that it presents less of a hazard. As the hook's centre of gravity is slightly off the axis it rotates on, gravity pulls the hook upright, so there isn't a mechanism that can fail.



sample work

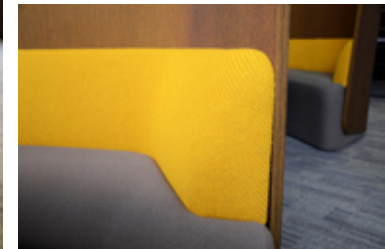
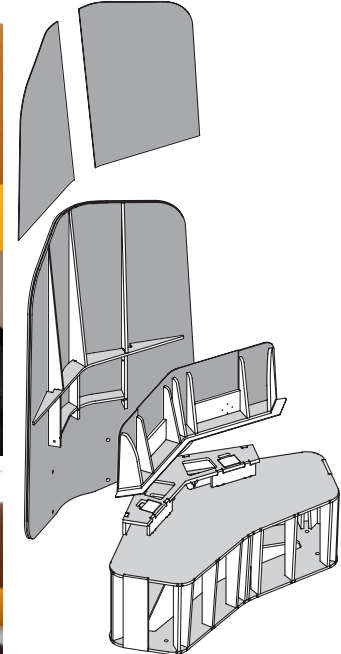
multimania!



Multimania!: Simple board game designed to help teach times tables to children aged from 5 to 11. The original concept came from a homework project my son Daniel had in year 3.



sample work



MATRIX

Matrix 6 - Frem Group: Modular office furniture system designed to allow differently sized components to fit together to form meeting and breakout areas. The original concept was developed by Rock Galpin, but I was asked to get the concept designs to a stage where they could be manufactured.

sample work

SEKTOR



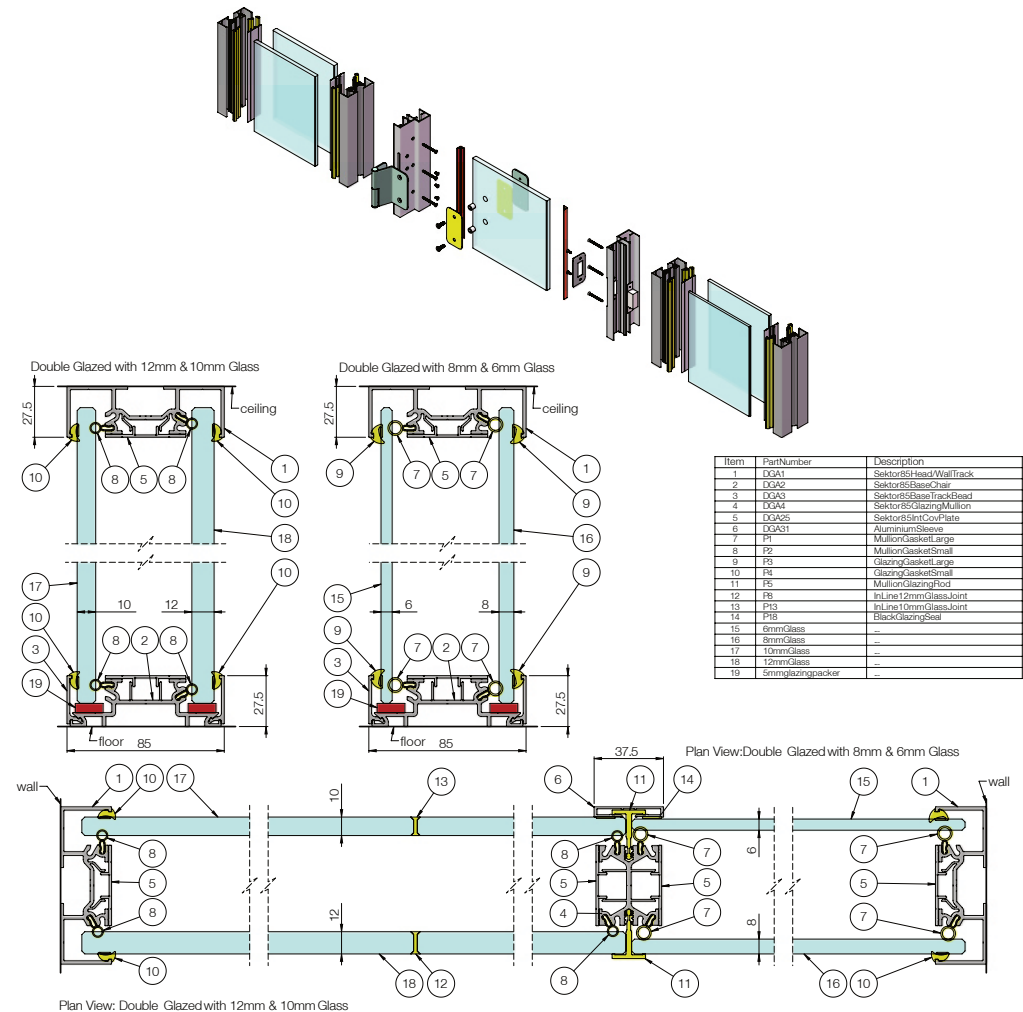
Partitioning - Custom Sytems Ltd - Sektor 85 and Sektor 25 partitioning systems, designed with Custom Systems Ltd for CCF Ltd. The project commenced in late 2010 and was finally launched in September 2013.

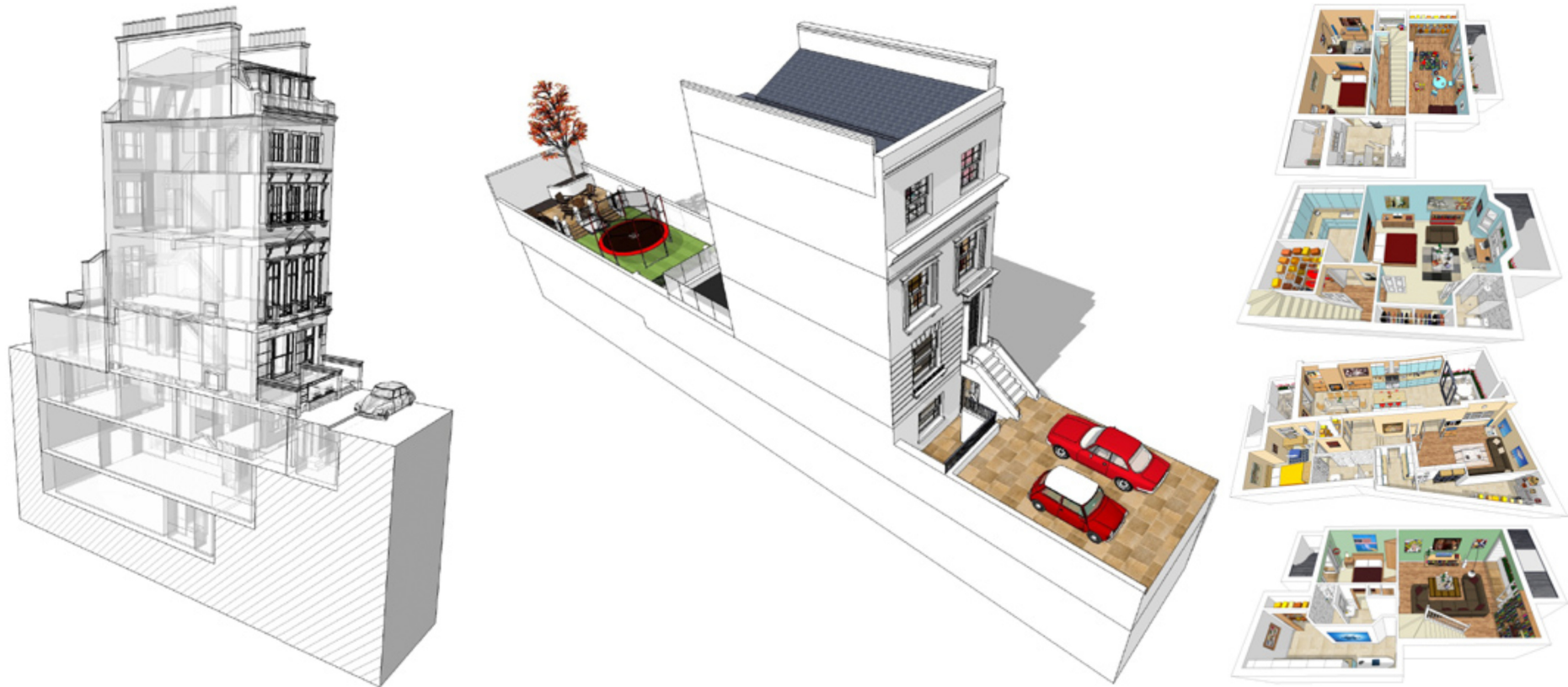
Over forty custom aluminium profiles have been designed and put into production for the two systems as well as three custom plastic extrusions and three custom steel fire rating channels.

Development work was done using SpaceClaim, with the detailed assembly drawings and detailed manufacturing drawings produced in SolidWorks. 97 drawings, both 2D and 3D, were produced for the technical documents. Sektor 85 and Sektor 25 have been designed to work together and have a number of interchangeable components.



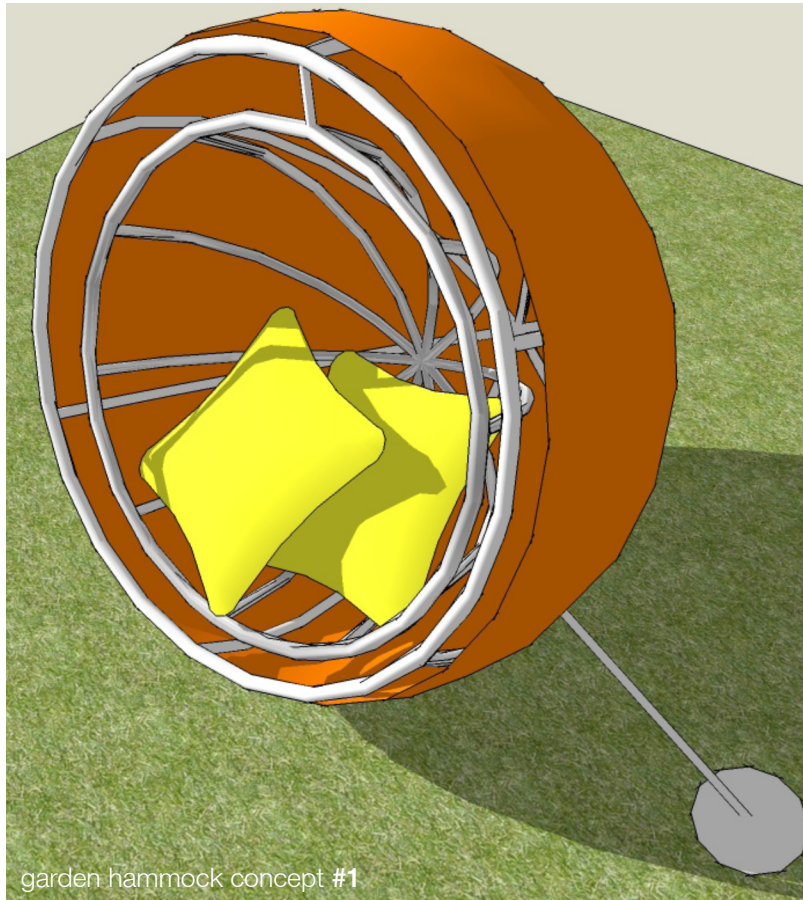
sample work





SketchUp Visuals - Cranbrook Basements Ltd: Since June 2008 I have produced close to a hundred development visuals for Cranbrook Basements. These have ranged from simple one room basements to multi-floor renovations in multi-million pound London properties. Cranbrook would send hand drawn dimensioned plans, or for the bigger developments AutoCAD drawings showing a plan view of each floor and vertical sections. From these I would produce a SketchUp model and a PDF document with 6 to 8 views of the project.

sample work



Garden Hammock - Workplace Projects: The brief for the Garden Hammock project was to come up with a couple of concepts and to visualise the concept that Workplace Projects's client had seen. Workplace Projects thought that concept #1 was the most striking design but the client preferred concept #3. I produced the drawings to manufacture the prototype shown above.

sample work

screensolutions®

In-house Designer - Screen Solutions Ltd: Designed and developed the following products:

Reflection - 35mm screening system, Screen Solutions best selling product, which has led to the company becoming the market leader.

Formation: Freestanding cable managed office system with glass sliding doors. Designed patented linking method, liaised extensively with patent lawyers.

Quadro: Designed new version of Formation system with cleaner column, beam and panel extrusion designs.

Crinion 35: Screen range for Knoll International.

Vitra On Screen: Screening range for Vitra.

Tambour Storage Box: Sheet metal & MDF storage box designed primarily for export.

Planned photo shoots and helped with the production of company literature for all product ranges.

Planned and installed company stands at major office furniture trade exhibitions:

1998 Orgatec, Cologne
1999 Workplace, Earls Court
2000 Orgatec, Cologne
2001 Workplace, EXCEL
2002 Spectrum, Commonwealth Institute

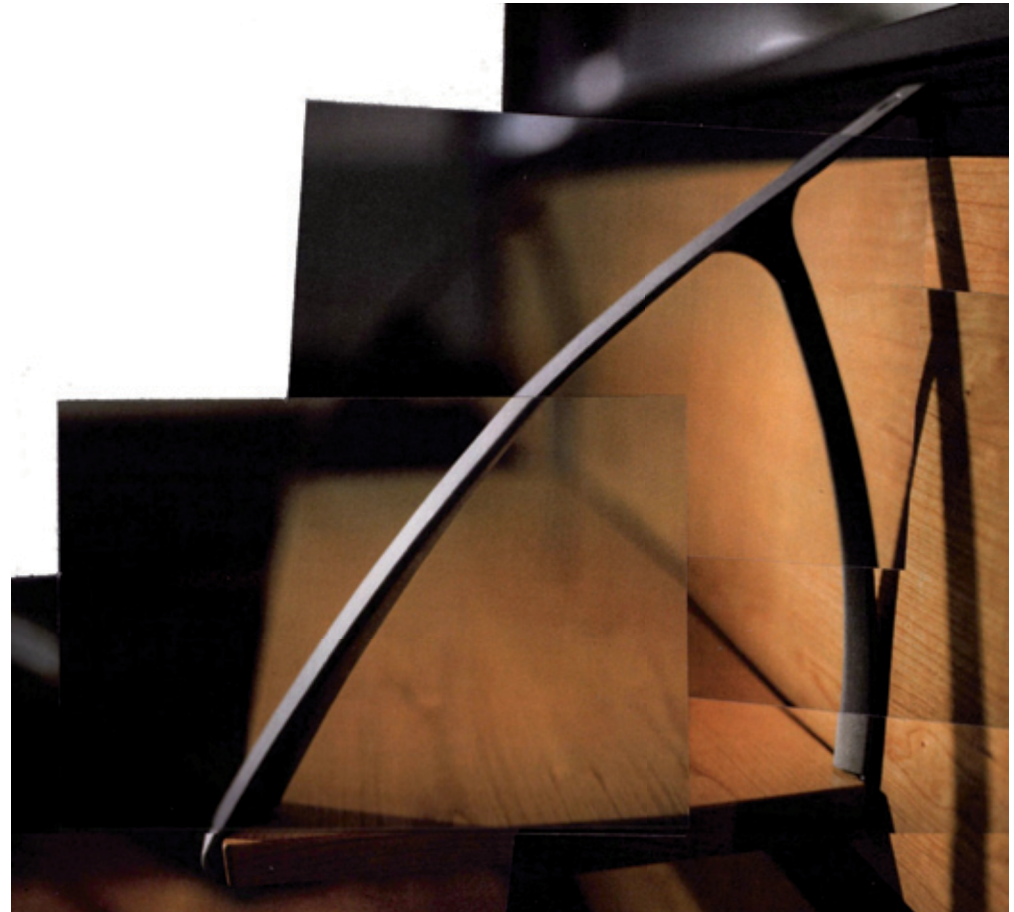
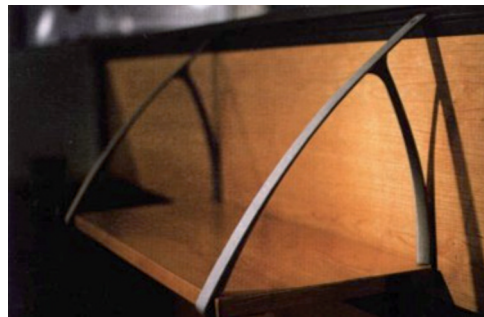
sample work





Wishbone Shelf Bracket - Screenbase Ltd:

Gravity die cast Wishbone Shelf Bracket.



sample work